



TROPICROP

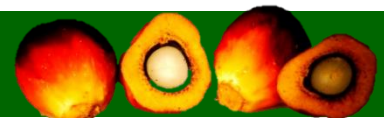


Introduction

1. Established in 1992

2. Objectives

- To provide efficient and comprehensive services to plantation & agro-based industries as well as processing installations for plantation products globally
- Enhance project performance with our commitment to ensure the continuous profitability on a long-term basis

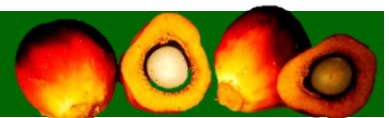


Group Management Committee

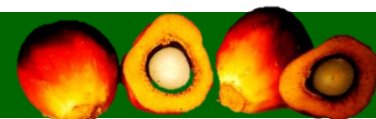
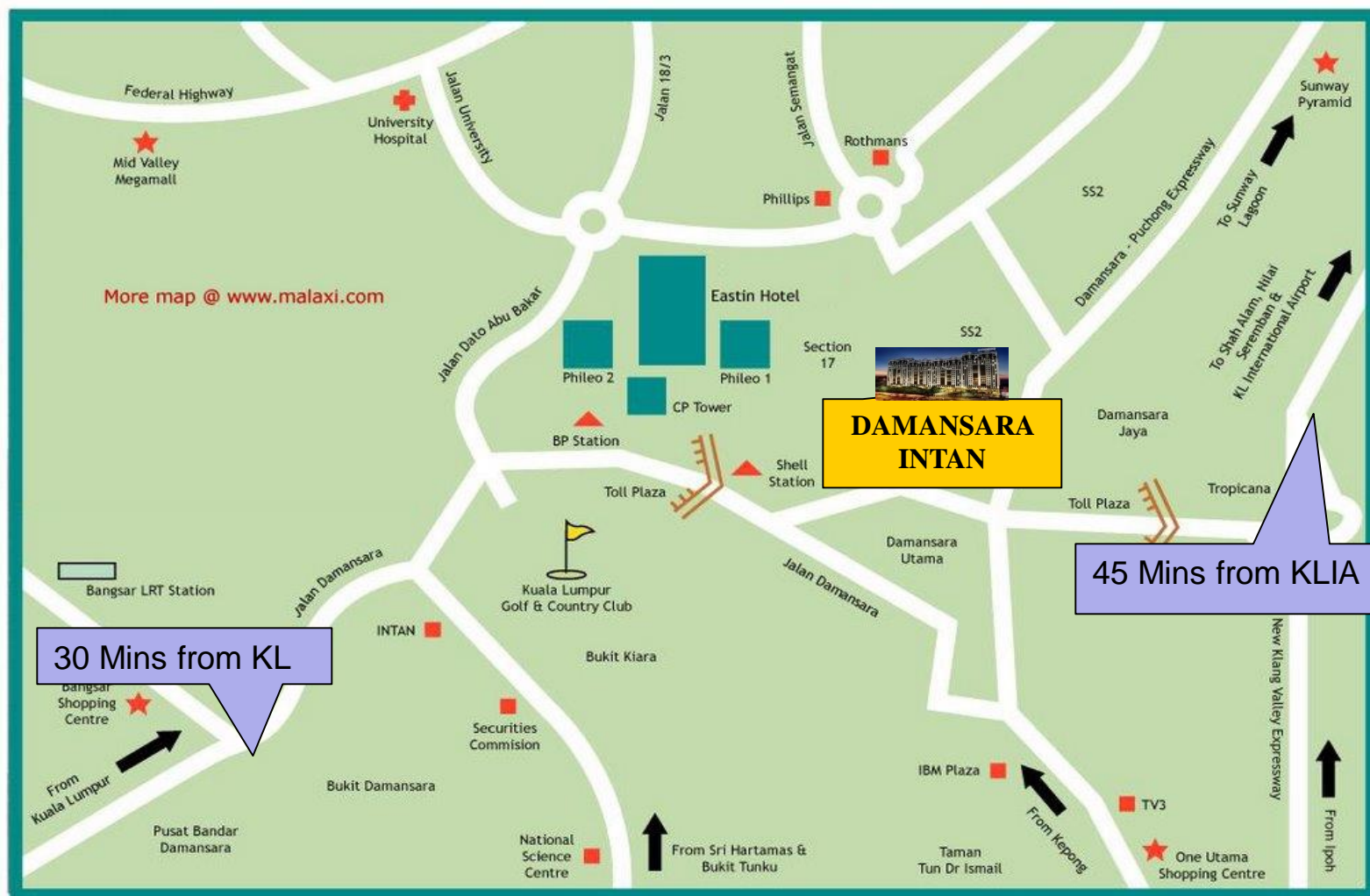
Name

Position

- | | |
|-----------------------------|------------------------------------|
| 1. Dr. K.L.Wong | • Chairman |
| 2. En. Harun Abd Aziz | • Executive Director |
| 3. Mr. Wong Wuey Wuen | • Corporate Planning |
| 4. Mr. Wong Wuey Chuen | • Business Development |
| 5. Mr. Chua Kim Soon | • Plantation Advisor |
| 6. Mr. Braine Yap Ching Hoe | • Principal Agronomist |
| 7. Mr.PremKumar Tamilarasan | • Agronomist/Plantation Consultant |



Our Office



Scope of Services

- Pre-development Studies and Assessment
- Feasibility Studies and Land Assessment
- Plantation Development and Establishment
- Management and Plantation Advisory Services
- Agronomic Services
- GIS/GPS Survey and Consultancy
- Agro-Forestry Management
- Palm Oil Mill Consultancy
- Rubber Factory Establishment





TROPICROP

On Going Projects



Sungai Budi Group, Indonesia

100,000 ha
Agro & PA
services.

Nursery Establishment



Road Upkeep



Soil Amelioration



Immature rubber inter-cropped with pineapple.



**Mechanical
fertilizer
application**



**Flood mitigation
program**



**Establishment of
rubber nursery**



**Rubber processing
facility under
construction**



Korindo Group, Irian Jaya, Indonesia



Soil sampling and observation at site during feasibility study



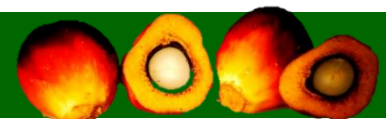
Tropicrop's Team at Korindo Base Camp in Irian Jaya



Oil palm seedlings in small polybags



Big polybags layout at Main Nursery





TROPICROP

Agronomic Consulting Services



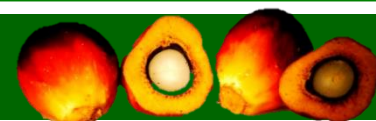
Agronomic Services



**Onsite training
for leaf
sampling and
Vegetative
Measurement
(Bakri Bros.
Group,
Indonesia)**



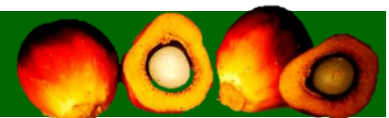
**Classroom
training on
oil palm
basic
biology,
physiology
&
agronomy.**



Agronomic Services

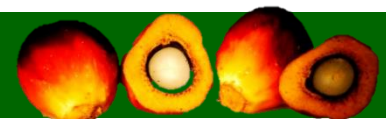
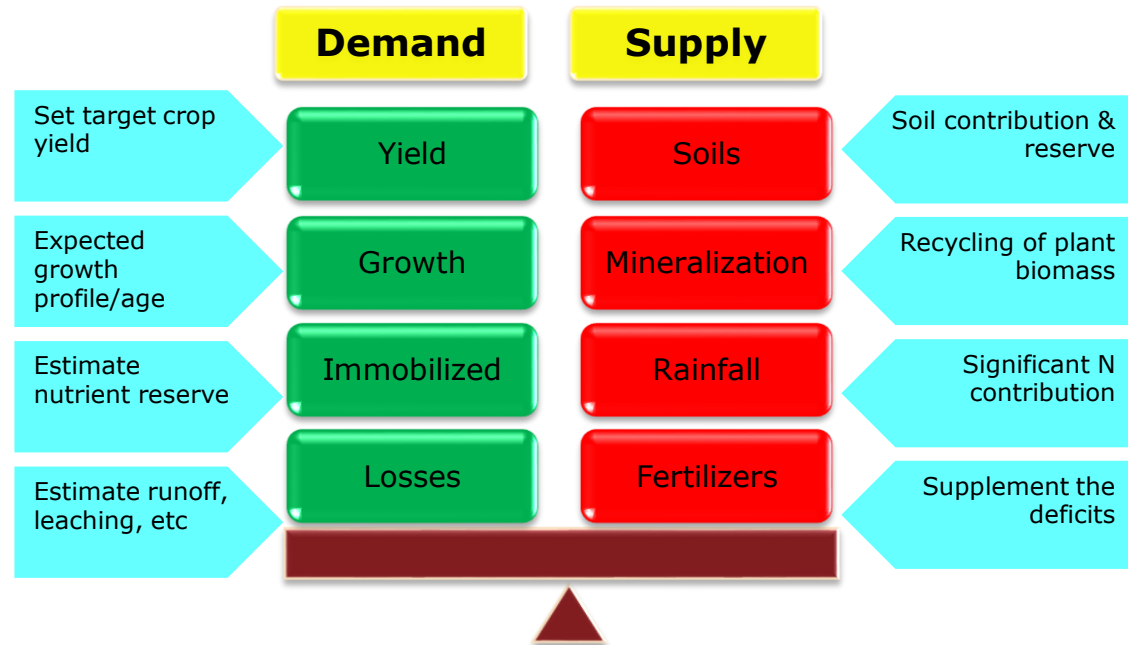
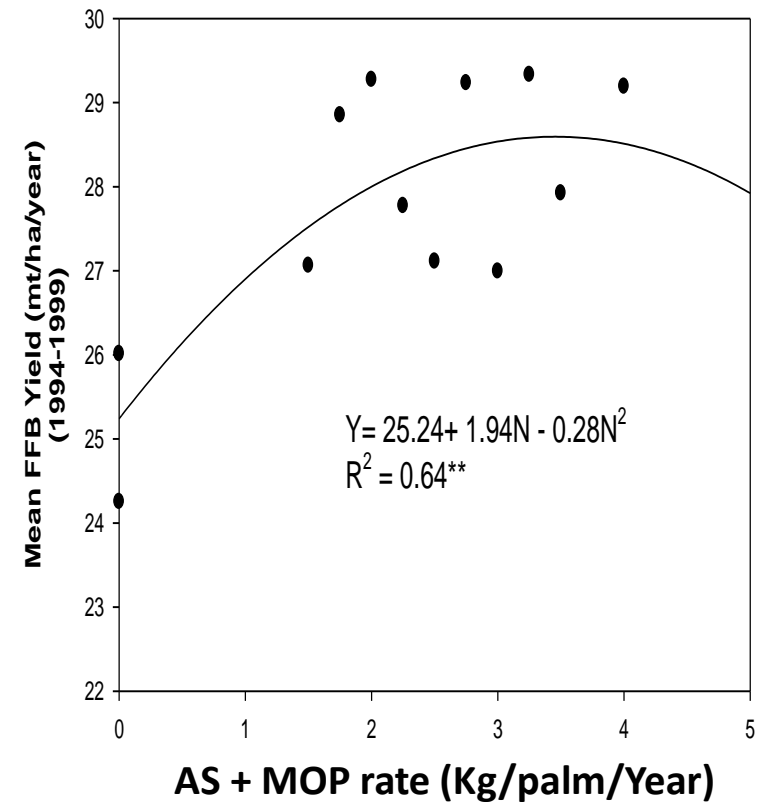


Foliar sampling training with on-site oven setup in Grand Olie Plantation, Miri, Sarawak.



Agronomic Services

Fertilizer Recommendations with scientific reference and precision





TROPICROP

Planting Advisory



Planting Advisory



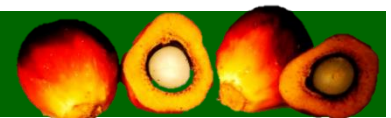
Cover-crop establishment to minimize erosion, control weed growth and enriched soil



Tropicrop's consultant evaluating mulching mats manufactured from empty fruit bunches.



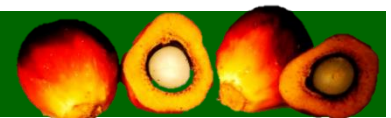
Tropicrop's consultant recommending on-site practical road construction in newly developed peat land in Medan, Indonesia.



Planting Advisory



Roads, drains and estate infrastructures advised and recommended by Tropicrop's consultants.



Planting Advisory



Nursery inspection by Tropicrop's Planting Advisor (Tawakal Sejati, Malaysia)



On site discussion between Tropicrop's Planting Advisor and Estate Management (Budi Duta Investindo, Indonesia)



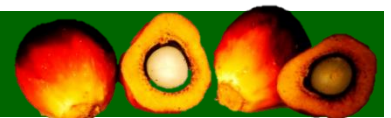
Soil And Terrain Survey



Soil sampling in progress (Bridgestone Group, Indonesia)



Soil sampling in progress (Bridgestone Group, Indonesia)





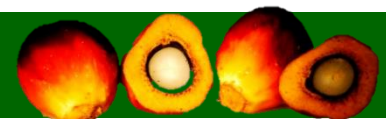
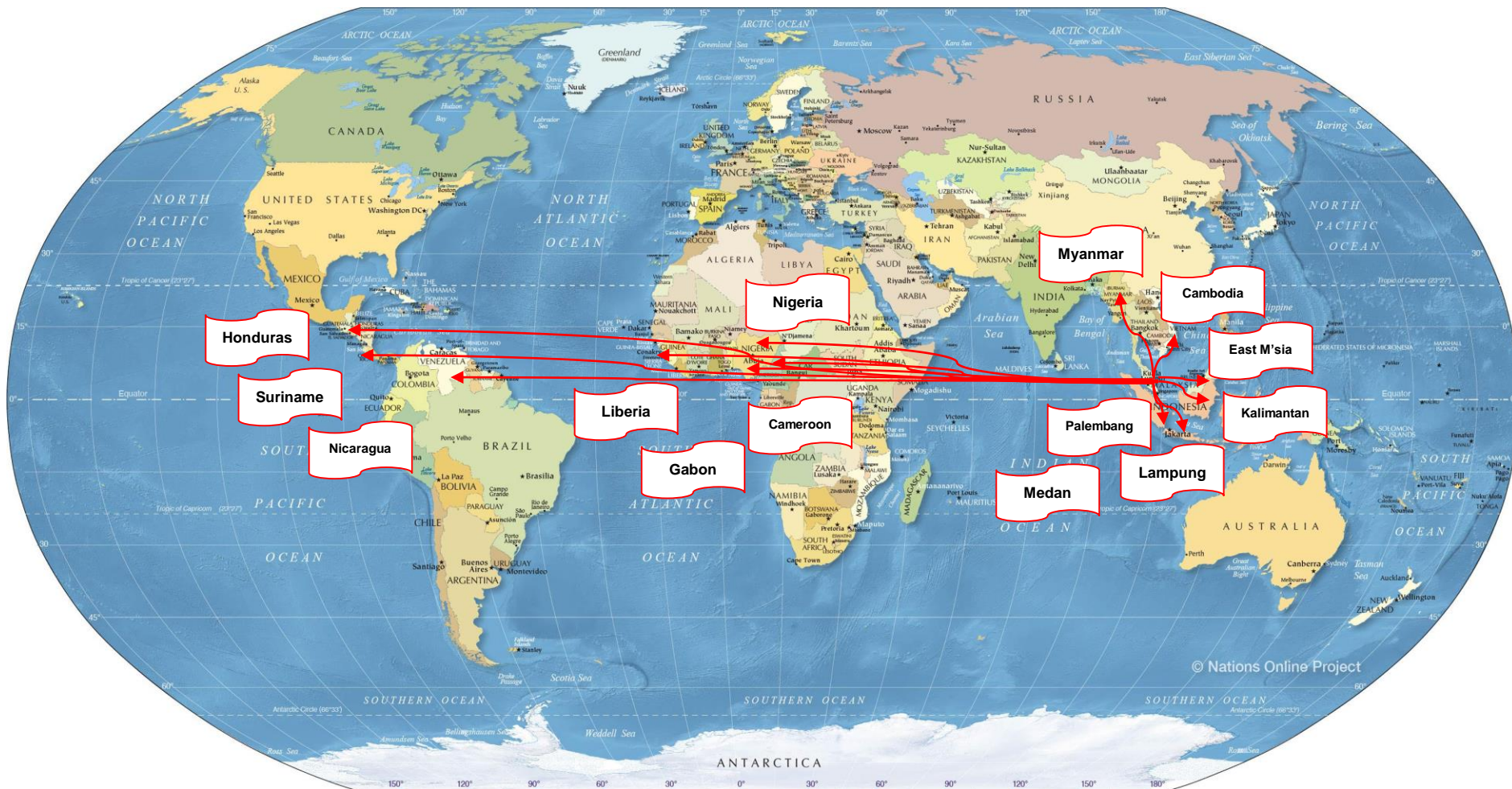
TROPICROP

Feasibility Studies



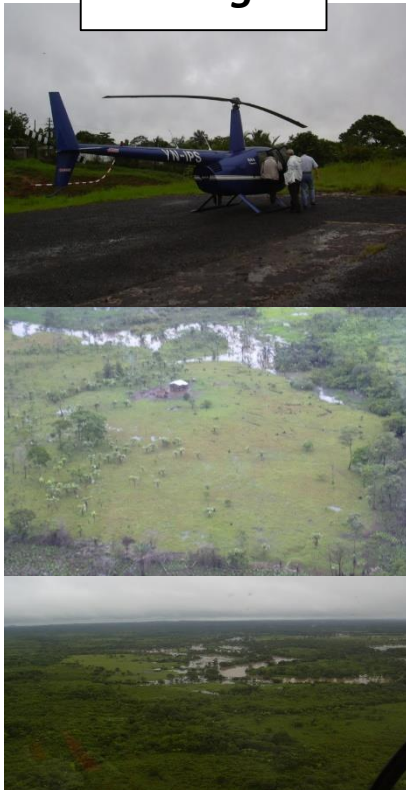
Feasibility Studies

Projects Completed Globally:



Feasibility Studies

Nicaragua



Suriname



Liberia



Honduras





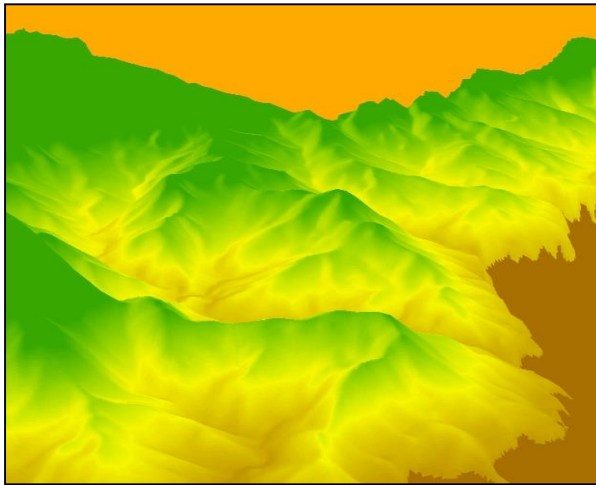
TROPICROP

***Geographical
Information System
Mapping (GIS)/
Global Positioning
System (GPS)
Survey & Consultancy***



GIS/GPS Survey & Consultancy

- We've work with reputable 3rd party GIS/GPS service provider and able to deliver and provide spatial interpretation of GIS survey without compromising the practicability on the ground.
- Services provided includes:



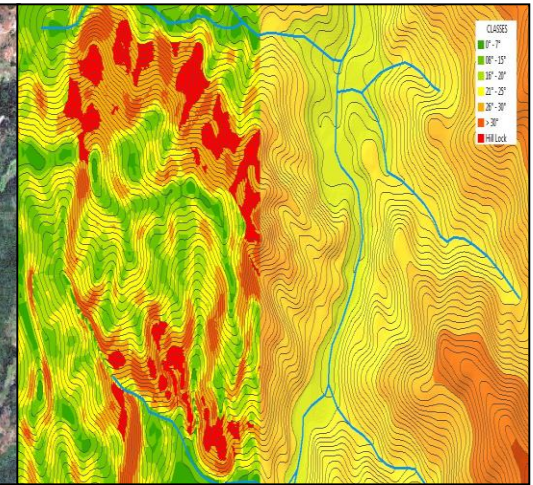
COMPREHENSIVE 3D VIEW OF THE AREA

LAND EVALUATION



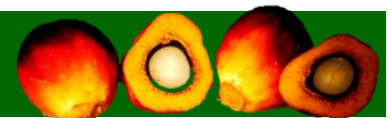
LANDUSE & LANDCOVER MAPPING

**DETECT ENCHROACHMENT &
ILLEGAL ACTIVITIES**



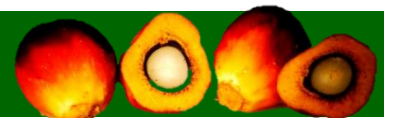
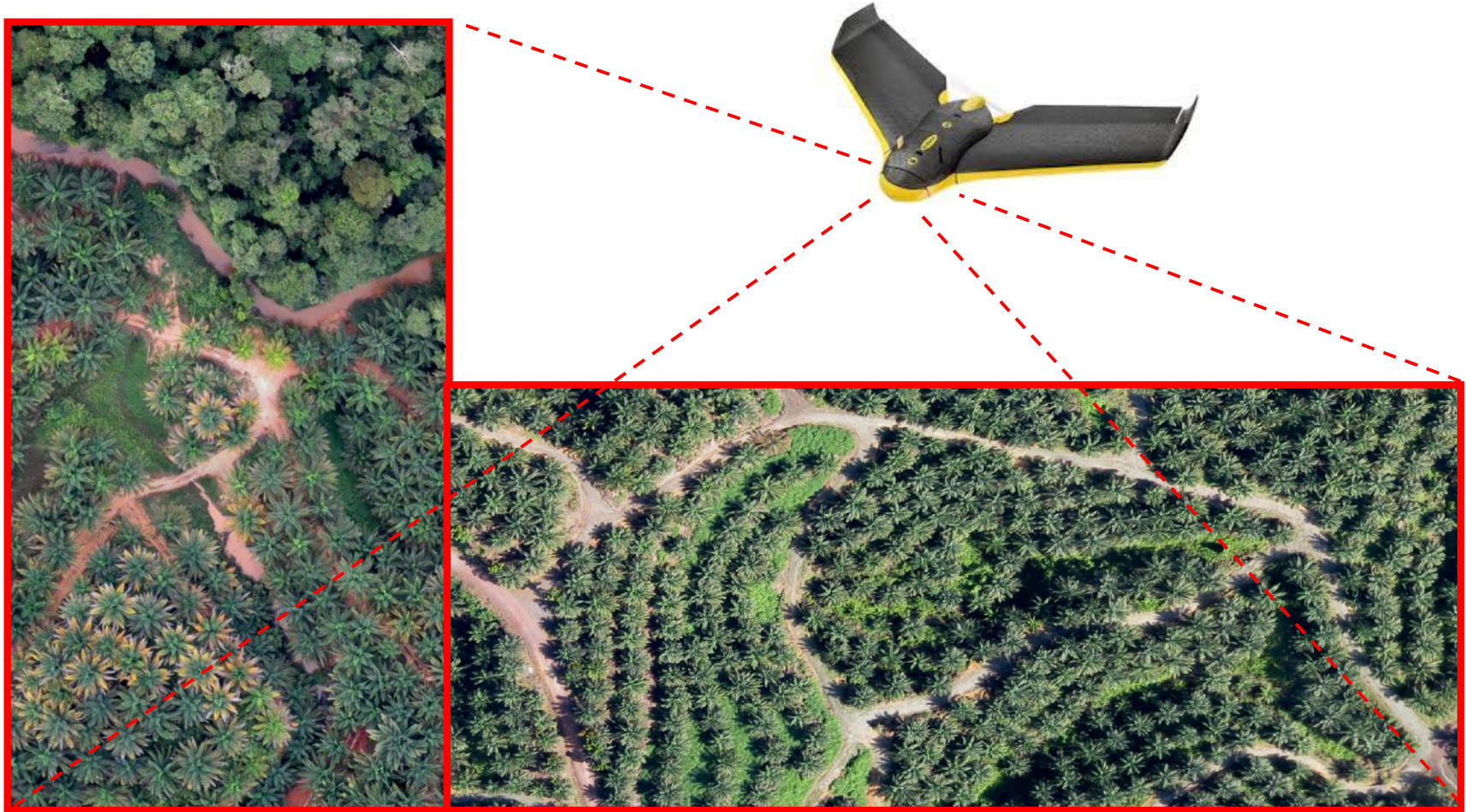
TOPOGRAPHY & SLOPE ANALYSIS

**ESTIMATE POTENTIAL
DEVELOPMENT AREA**

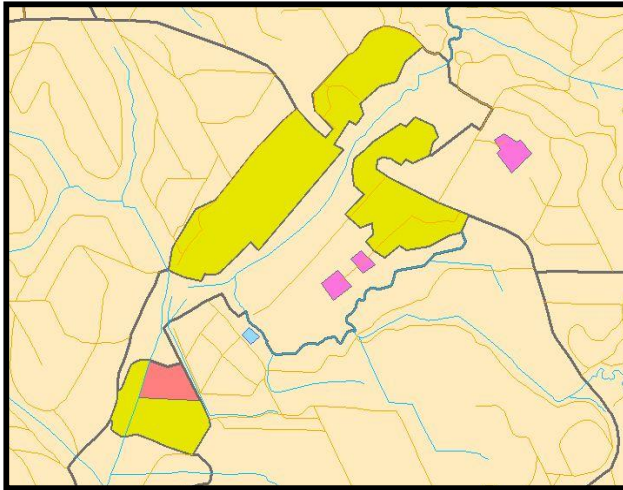


GIS/GPS Survey & Consultancy

- High resolutions data for visual P&D/nutrient deficiency monitoring

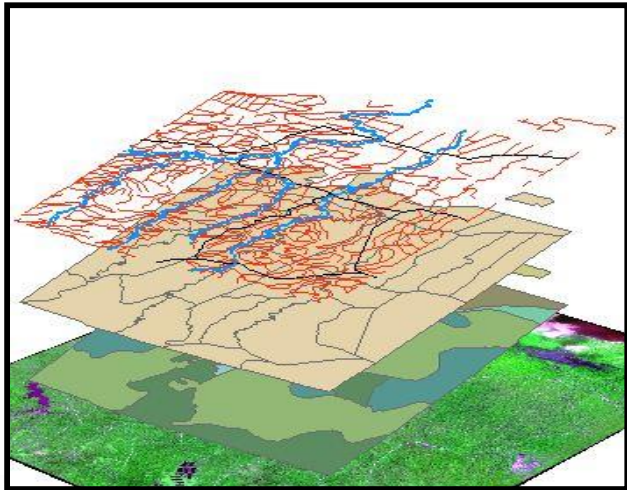


GIS/GPS Survey & Consultancy



DETAIL LANDUSE & LAND COVER

PRODUCTIVE & UNPRODUCTIVE AREA

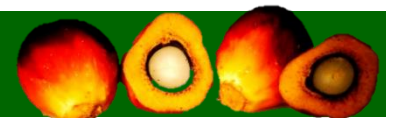


GIS DATA COMPILATION

POWERED BY SUPERGEO TECHNOLOGY



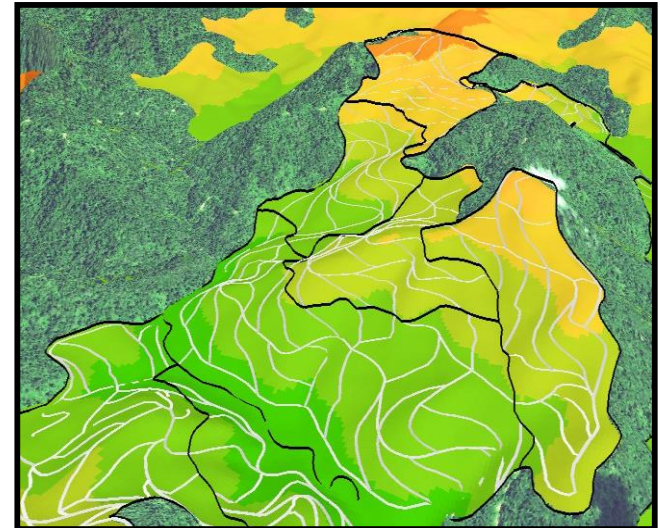
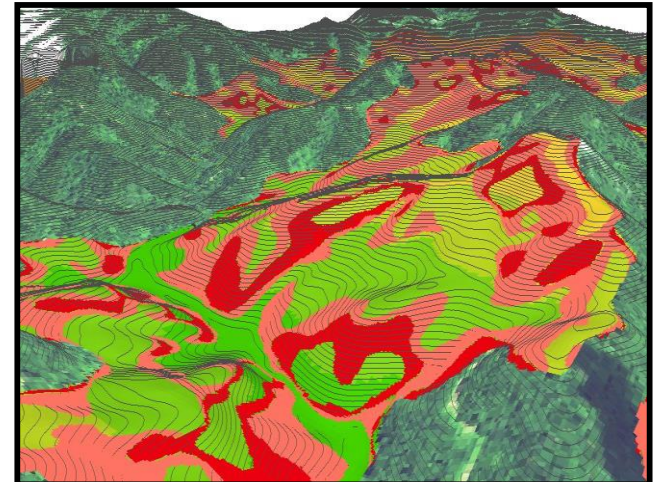
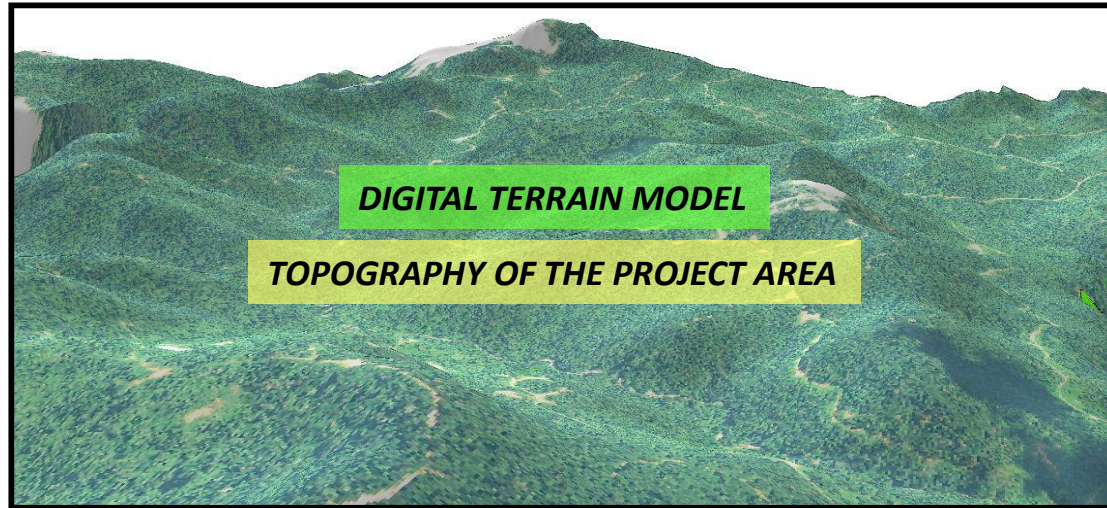
RELIABLE STAND COUNT



GIS/GPS Survey & Consultancy

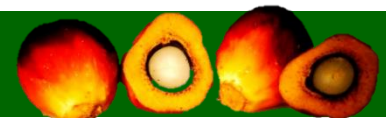
POTENTIAL DEVELOPMENT AREA

SLOPE ANALYSIS & RESERVE AREA



BLOCK BOUNDARY DEMARCATION

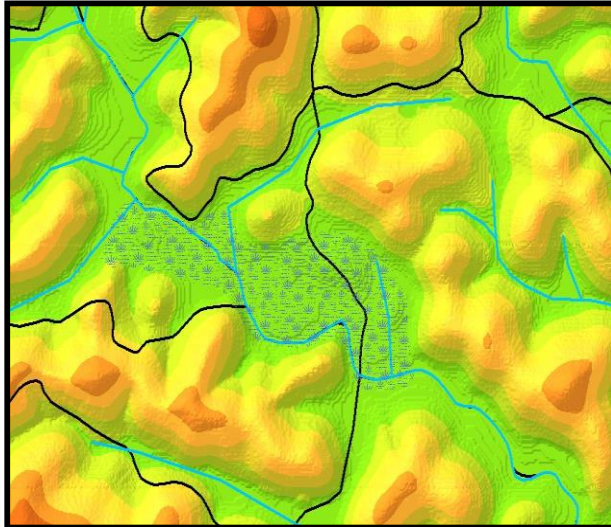
EFFICIENT ROAD & EVACUATION SYSTEM



GIS/GPS Survey & Consultancy



TERRACE ESTIMATION



FLOOD PRONE AREA DETECTION

DESIGN EFFICIENT DRAINAGE SYSTEM



PALM STAND ESTIMATION

**SUITABLE FACILITIES
ALLOCATION**



TROPICROP

***Project Assessments,
JV Proposals,
Acquisitions &
Liquidation***



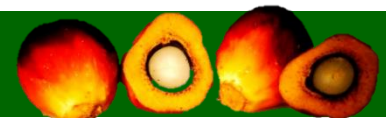
Project Assessments, JV Proposals, Acquisitions & Liquidation

Areas covered:

- Malaysia   
- Indonesia 
- Myanmar 
- Vietnam 
- Honduras 
- Africa 

Expertise provided:

- Business Development Plan
- Cash-Flow Analysis (IRR/ NPV/ ROI/ Payback)
- Sensitivity Analysis
- Market Analysis
- Industry Benchmark (Cost/ Best Practices)



Project Assessments, JV Proposals, Acquisitions & Liquidation

CASH FLOW ANALYSIS

FINANCIAL ANALYSIS ON 405 HECTARES OF OIL PALM PLANTATION
(LOAN / EQUITY CASE : FFB @ MYR 400 / MT)

PARAMETERS	YEAR 1	YEAR 2	YEAR 3	YEAR 4	YEAR 5	YEAR 6	YEAR 7	YEAR 8	YEAR 9	YEAR 10
1. Total Matured Hectare	405	405	405	405	405	405	405	405	405	405
2. FFB Production (MT)	0	0	0	0	0	0	0	0	0	0
3. FFB Price	27,414.90	27,414.90	27,414.90	27,414.90	27,414.90	27,414.90	27,414.90	27,414.90	27,414.90	27,414.90
4. Revenue (FFB (MT))	0	0	0	0	0	0	0	0	0	0
5. Revenue (FFB (MT))	0	0	0	0	0	0	0	0	0	0
6. TOTAL REVENUE	0	0	0	0	0	0	0	0	0	0
7. OPERATING EXPENDITURES										
8. Upkeep & Maintenance	0	0	0	0	0	0	0	0	0	0
9. Contract Harvesting & Collection	0	0	0	0	0	0	0	0	0	0
10. Contract FFB Transportation	0	0	0	0	0	0	0	0	0	0
11. Admin. & Overheads (FFB prod.)	0	0	0	0	0	0	0	0	0	0
12. Land Rental	0	0	0	0	0	0	0	0	0	0
13. TOTAL EXPENDITURES	0	0	0	0	0	0	0	0	0	0
14. CASH FLOW	0	0	0	0	0	0	0	0	0	0
15. Financial Summary										
16. Cashflow	0	0	0	0	0	0	0	0	0	0
17. Financial Summary										
18. Cashflow	0	0	0	0	0	0	0	0	0	0
19. Financial Summary										
20. Cashflow	0	0	0	0	0	0	0	0	0	0

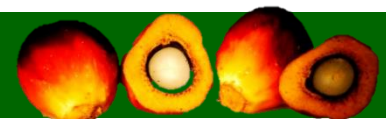
SENSITIVITY ANALYSIS

SENSITIVITY ANALYSIS - OPERATING PROFIT (Varying Production to Varying CPO Price)

FFB PRICE / MT	100,000	150,000	175,000	200,000	150,000
350	(1,285,695)	(1,135,695)	5,426,805	11,989,305	(1,135,695)
375	(1,385,695)	1,676,805	8,708,055	15,739,305	1,676,805
400	(10,510,695)	4,489,305	11,989,305	18,489,305	4,489,305
425	(8,635,695)	7,301,805	15,270,555	23,239,305	7,301,805
450	(6,760,695)	10,114,305	18,551,805	26,989,305	10,114,305

Profit & Loss Statement

Revenue	97,194,800
Costs of Sales	54,014,260
Gross Income	43,180,540
Taxation	10,795,135
Operating Profit	32,385,405



Project Assessments, JV Proposals, Acquisitions & Liquidation

Bridgestone Group



**Rubber Estate &
Factory
assessment/
evaluation**

Beta Omega KALTIM



Site Assessment

KOSMA Group

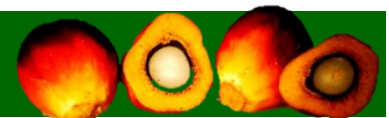


**Site Assessment
and Estate
inspection in
Cambodia**

Golden Palm Grower's Berhad (in-liquidation)



**Site Assessment for
liquidation process
and Estate
Management during
liquidation.**



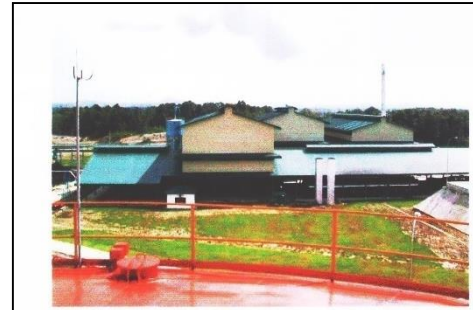


TROPICROP

Engineering Projects



Engineering Projects



**Mechanical
work
enhancement in
Bau, Sarawak.
(SALCRA)**



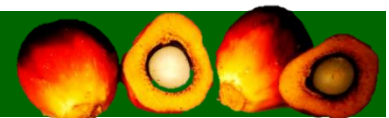
***New Project,
Cukra,
Nicaragua***

**New kernel recovery
station as part of plant
expansion in Vichittbhan,
Thailand.**

**Turnkey project in Sg.
Rangit, KALTEN.**



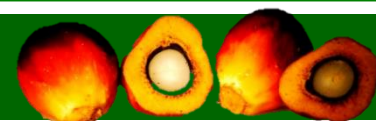
***Refinery
Building,
Aguan,
Honduras***



Rubber Factory Projects

Factory Establishment and Production Consultancy:

- Ribbed Smoke Sheet Factory – Sungai Budi Group, Lampung, Indonesia
- Latex Concentrate Factory – Sungai Budi Group, Lampung, Indonesia
- Crumb Rubber Factory – Golden Energy, Jambi, Indonesia



Other Services

- Technology Transfer/ Training
- Soil Survey
- Pest & Disease
- Due Diligence

Specialized visits for specific topic for training, problems such as pest and disease attacks, soil study and due diligence if required.





TROPICROP

Thank You

Tropicrop Agricultural Services

Suite 627, 6th Floor, Block A,
Damansara Intan, No. 1, Jln SS 20/27,
47400 Petaling Jaya,
Selangor Darul Ehsan, Malaysia.

Tel : +603.7725 6166

Fax : +603.7725 3166

Email : admin@tropicrop.com

